

Pre-Operative/Pre-Procedural COVID-19 Testing for Both Vaccinated and Unvaccinated Patients

The Omicron variant of SARS-CoV-2 has supplanted the Delta variant as the dominant cause almost all COVID-19 infections in the United States. Like Delta, it may cause asymptomatic or minimally symptomatic infection even in fully vaccinated patients, with large amounts of virus present in the respiratory tract. Based on guidance from the New York State Department of Health, the Anesthesia Patient Foundation and the American Society of Anesthesiologists, **pre-procedure testing will continue to be necessary for procedures requiring anesthesia (i.e. general anesthesia, sedation (including MAC and conscious sedation), endoscopy).**

Testing for elective procedures should be performed 48-72 hours from the morning of the anticipated procedure with patient self-quarantine to reduce the risk of subsequent infection. Testing for emergent/urgent procedures will follow previous onsite testing protocol (see flowchart below) and will be required regardless of vaccination status or previous positivity. When this is not possible, patients will be treated as a presumptive infection (PUI).

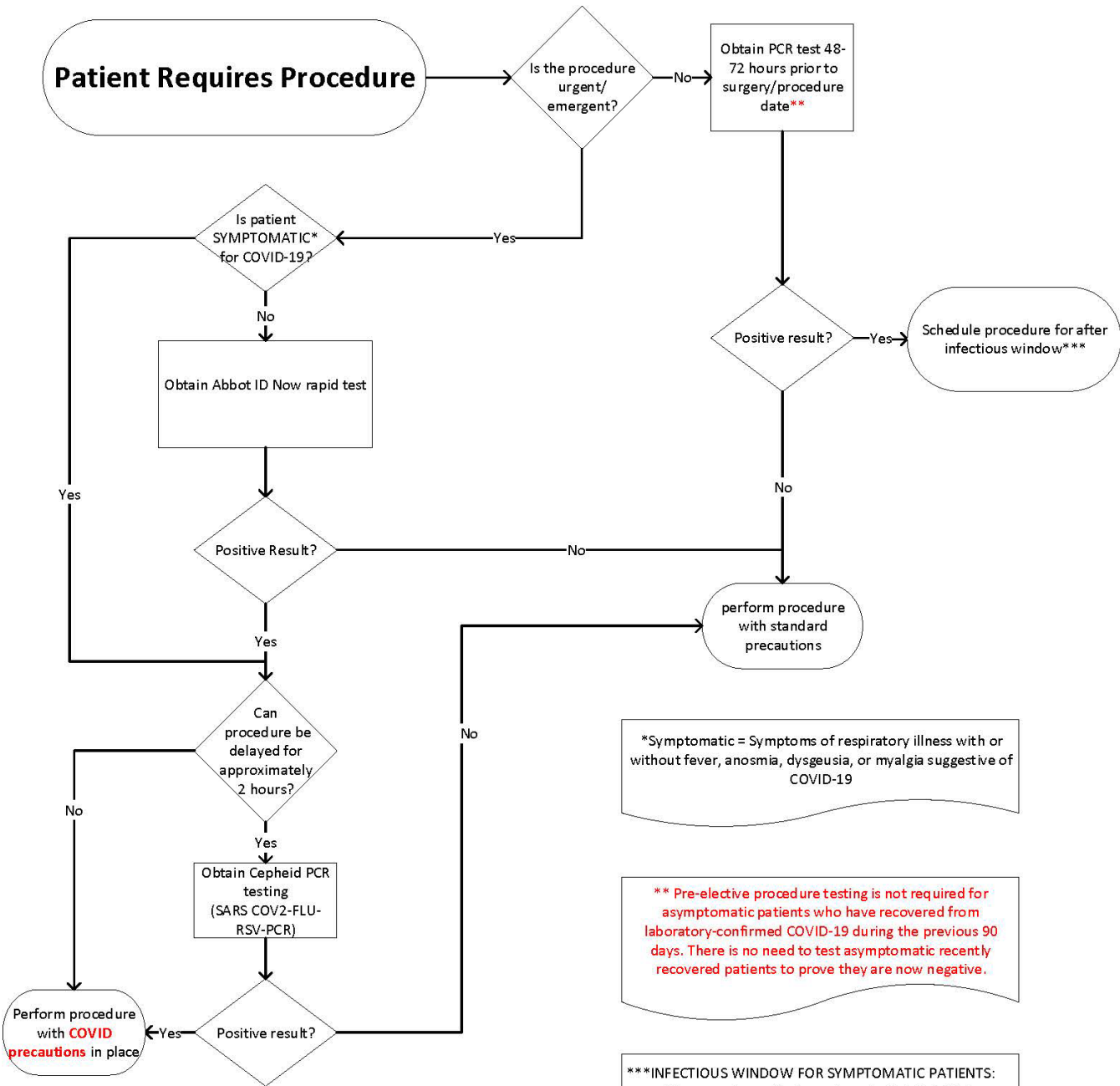
Ideally, testing should be performed at a Kaleida Health facility, but alternatives are acceptable if they are PCR equivalent and if results are communicated directly to the proceduralist's office at least 24 hours prior to the procedure. Drive through testing for patients will be offered as follows:

- **BGMC East Entrance**
 - Monday-Friday: 8 a.m.-4 p.m.
- **Walden Galleria (former Sears Automotive building):**
 - Monday-Friday: 8 a.m.-4 p.m.
 - Saturday, Sunday: 7 a.m.-3 p.m.

Due to anticipated reagent shortages, rapid onsite testing may not be available for patients who arrive without evidence of testing and may result in cancellation or delay of procedure.

Surgeon/proceduralist's office workflows related to the scheduling of pre-procedural testing will need to be reinstated to support this policy change.

Patient Requires Procedure



*Symptomatic = Symptoms of respiratory illness with or without fever, anosmia, dysgeusia, or myalgia suggestive of COVID-19

** Pre-elective procedure testing is not required for asymptomatic patients who have recovered from laboratory-confirmed COVID-19 during the previous 90 days. There is no need to test asymptomatic recently recovered patients to prove they are now negative.

***INFECTIOUS WINDOW FOR SYMPTOMATIC PATIENTS:

- All recovering patients can be scheduled at 20 days post initial symptoms or positive COVID test.
- Healthy patients with a normal immune system can be scheduled at 10 days post initial symptoms or positive COVID test.